



# 1<sup>ST</sup> ERASMUS+ MATCHMAKING EVENT

Tuzla, October 20<sup>th</sup>, 2021

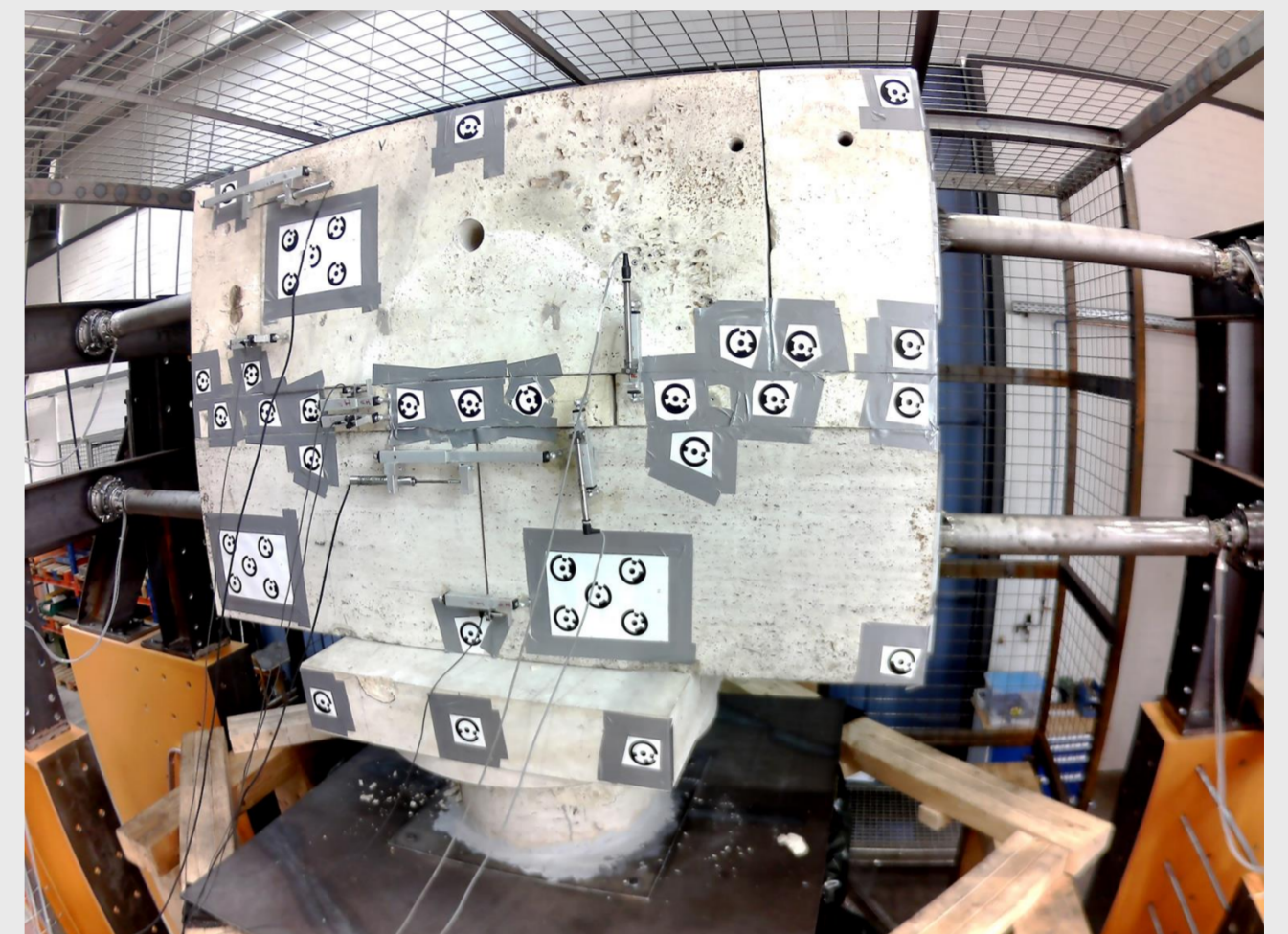
Prof. Dr.-Ing. Uwe E. Dorka

Steel- & Composite Structures, Dept. for Civil & Environmental Engineering

[uwe.dorka@uni-kassel.de](mailto:uwe.dorka@uni-kassel.de), +49 561 804 2667

## Areas of Interest in Research:

- **Protection of cultural heritage structures against earthquakes:** Experimental investigations, development of numerical models, retrofitting techniques
- **Hybrid Simulations:** Online coupling of specimen and large, non-linear numerical models, real-time simulations with *Subfeed Algorithm*
- **Seismic Control:** Advanced rigid-body control systems, esp. Hyde System, Tendon System and Pagoda System



Hybrid Simulation with section of entablature from Neptune Temple, Paestum, Italy on Stewart Platform

## Teaching Interest at Partner Inst.:

- **Seismic Control:** Advanced rigid-body control systems: Hyde System, Tendon System, Pagoda System and Base Isolation and their advantages in performance (robustness) and economy.

